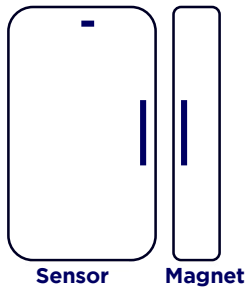


ShieldPro Door/Window Sensor Quick Start Guide



The ShieldPro Door/Window Sensor fits alongside door frames and windowsills.

What comes in the box?

- Sensor x 1
- Magnet x 1
- Wall screws x 4
- Wall anchors x 4

Sensor figures

Figure 1: Placement for door sensors

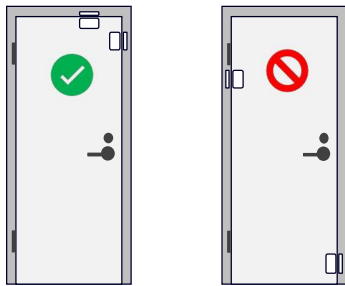


Figure 2: Placement for window sensors

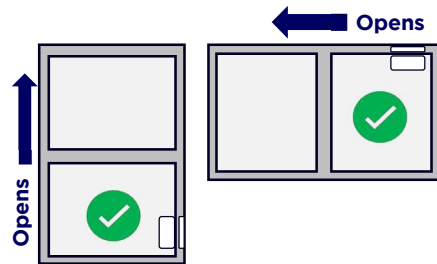


Figure 3: Grooves for positioning

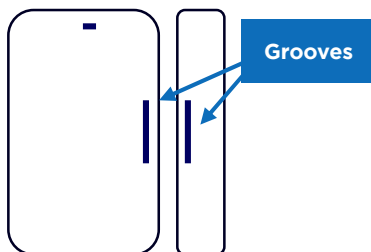
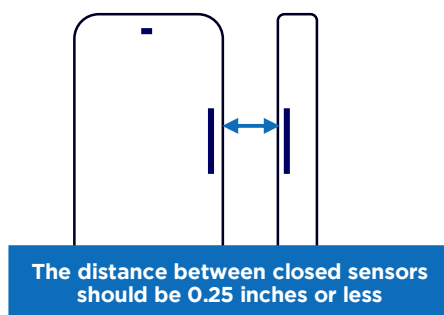


Figure 4: Distance between magnet and sensor



Placement tips

- Indoor use only.
- Pair with the panel before mounting your sensor.
- Place on the opening side of doors and windows (see **Figure 1** and **Figure 2**).
- The grooves must face each other (see **Figure 3**).
- Sensor and magnet must be 0.25 inches apart or less (see **Figure 4**).

Mount your Door/Window sensor with adhesive

Step 1 Clean and dry the sensor location.

Step 2 Remove all battery tabs from the sensor.

Step 3 Pair with the panel.

Settings (☰ button) > **Devices** > + > **Door** or **Window** > Follow the prompts to pair the sensor.

Step 4 Peel the protective backing off the sensor and press firmly against the surface.

Repeat with the magnet.

Questions?

Contact us at 1-800-574-7798 or CST@shieldpro.com