



Smoke/Carbon Monoxide (CO) Detector Quick Start Guide



The ShieldPro Smoke/CO detector's alarm sounds when levels get too high.

What comes in the box?

- Smoke/CO detector x 1
- Mounting bracket x 1
- Screws x 2
- Wall anchors x 2
- 3V Lithium battery x1
- Sticker

Smoke/CO detector figures

Figure 1: Remove bracket from Smoke/CO detector

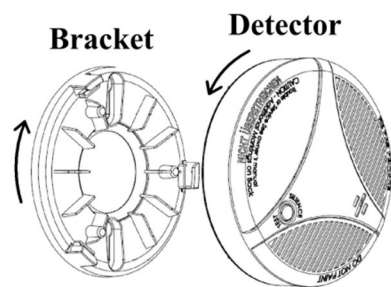


Figure 3: Topside of Smoke/CO detector

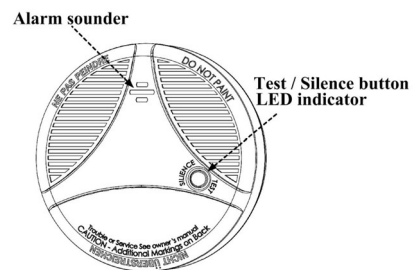


Figure 2: Install the battery

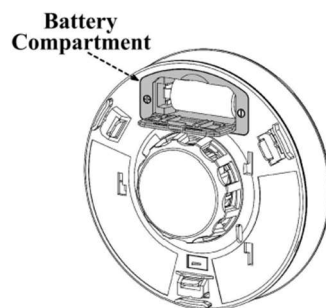
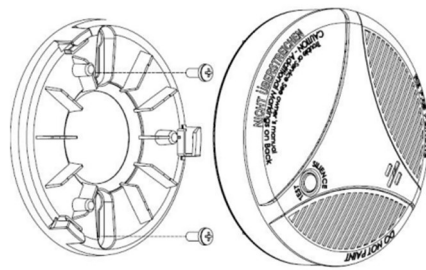


Figure 4: Mount Smoke/CO bracket



Placement tips

- Place on flat surface
- See **Placement Diagrams**

Mount your Smoke/CO detector

- Step 1** Remove the mounting bracket (see **Figure 1**).
- Step 2** Install the battery (see **Figure 2**) and test Smoke/CO detector (see **Figure 3**).
- Step 3** Pair with the panel.

Settings (☰ button) > **Devices** > + > Select **Smoke/CO** > Follow the panel's instructions to pair your Smoke/CO Detector.
- Step 4** Choose a location for your Smoke/CO detector (See **Placement diagrams**).
- Step 5** Use the bracket as a guide and determine where to place the screws (see **Figure 4**).
- Step 6** Screw the mounting bracket into the ceiling. Use the wall anchors provided as needed.
- Step 7** Use the provided sticker to record the date installed and place it on the Smoke/CO detector.
- Step 8** Twist Smoke/CO detector onto the mounting bracket to fix it in place.

Placement diagrams

Figure 5: Minimum recommended protection

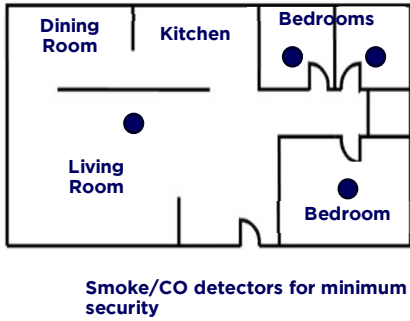


Figure 6: Location for placing Smoke/CO detectors for a multi-floor residence.

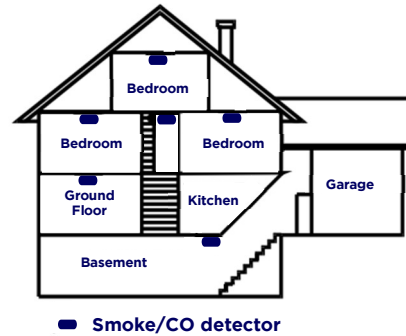


Figure 7: Recommended best and acceptable locations to mount Smoke/CO detectors.

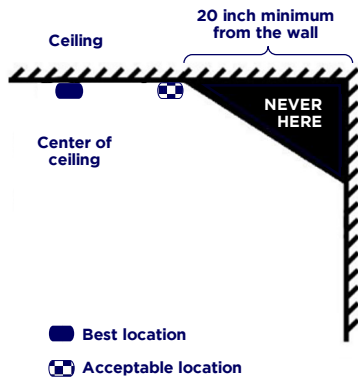
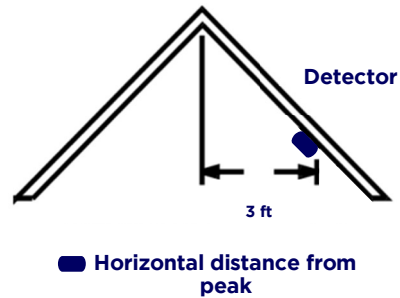


Figure 8: Recommended location to mount Smoke/CO detectors in rooms with angled ceilings.



Questions?

Contact us at 1-800-574-7798 or CST@shieldpro.com